

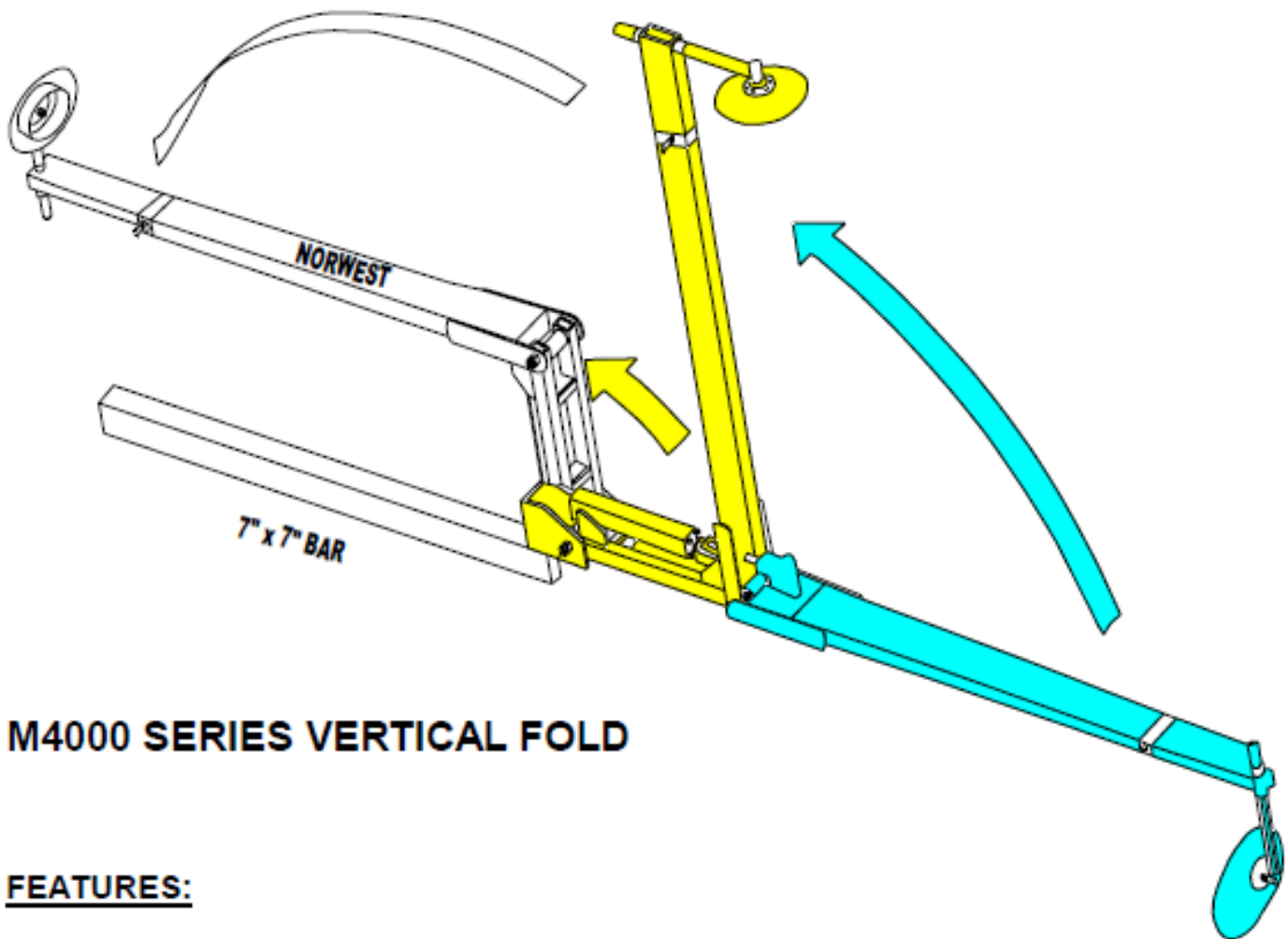


NORWEST

MANUFACTURING

71 SOUTH 215 WEST-RUPERT, ID- PHONE: (208) 436-1770 - FAX: (208) 436-1776

NORWEST ROW MARKERS



M4000 SERIES VERTICAL FOLD

FEATURES:

- *Pre-set marking disc
- *Heavy duty & built to last
- *Fits all common size tool bars
- *Comes with two way rams
- *Comes with pre-set flow control valves



NORWEST

MANUFACTURING

71 SOUTH 215 WEST-RUPERT, ID- PHONE: (208) 436-1770 - FAX: (208) 436-1776

ROW MARKER- VERTICAL FOLDING

M4000-ROW MARKER SERIES: TO ORDER A FULL SET YOU MUST ORDER TWO.

PRICES IN PRICING GUIDE ARE LISTED FOR SINGLE UNITS.

M4000-25	2-1/4" DIAMOND BAR
M4000-40	4" SQUARE BAR
M4000-50	5" SQUARE BAR
M4000-60	6" SQUARE BAR
M4000-70	7" SQUARE BAR

PLEASE SPECIFY TOOL BAR SIZE WHEN ORDERING ROW MARKERS. BRACKETS FIT STANDARD BAR SIZES 2-1/4" DIAMOND, 4", 5", 6", AND 7".

M4000 PARTS LIST

REF.	DESCRIPTION	PART NO.	REQ.	REF.	DESCRIPTION	PART NO.	REQ.
1	UPPER EXT. ARM	M1100	1	9	3/4" LOCK WASHER	FLW34	4
2	TOOL BAR BRACKET	M1000	1	10	3/4" HEX NUT	FHN34	4
4	PIVOT ROD	M1600	1	11	CYLINDER PIN	10205	2
5	1/4" X 2" ROLL PIN	G34-RP	2	12	SAFETY PIN	60870	2
6	3/4" X 7" CARRIAGE BOLT	FCB34700G5	4	13	HYDRAULIC CYLINDER	208DB-ASAE	1
7	CLAMP STRAPS			14	HYDRAULIC RESTRICTOR	1404-08-08-R	1
*	2-1/4" DIAMOND BAR	N1	2	15	HYDRAULIC ADAPTER	5502-8-8	1
*	4" STRAPS	M40	2	16	5/8" X 1-1/2" SET SCREW	FSHSS58150	4
*	5" STRAPS	M50	2	29	EXTENSION ARM 40"	M7300	1
*	6" STRAPS	M60	2	*	EXTENSION ARM 60"	M7300E	1
*	7" STRAPS	M70	2	*	EXTENSION ARM 80"	M7300EX	1
8	GREASE FITTING	1610	2	30	MARKER STANDARD	M7400	1

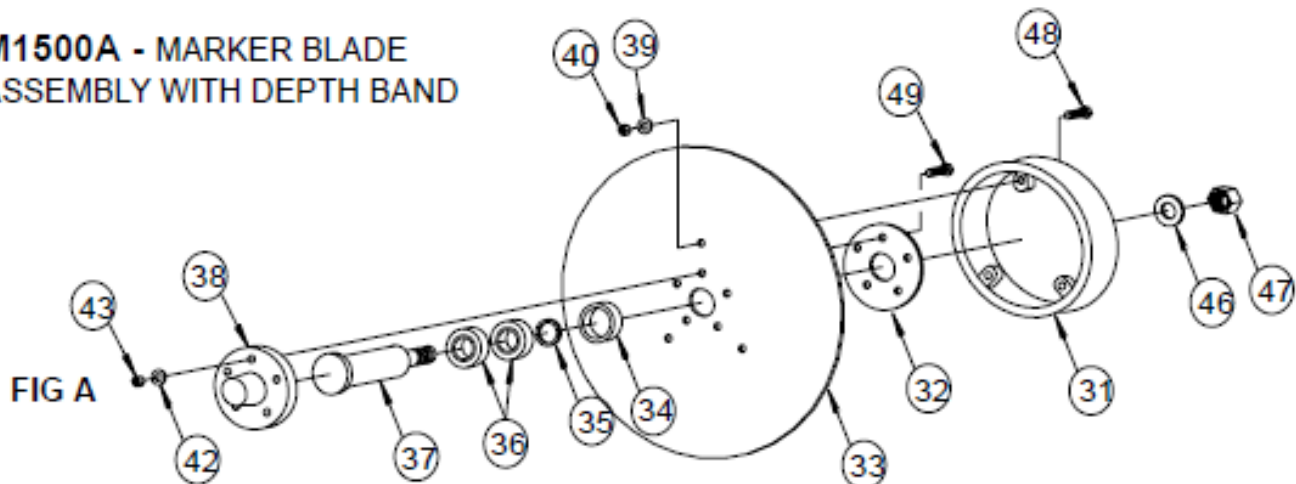
SUB ASSEMBLIES: SHOWN BELOW

M1500A-MARKER BLADE ASSEMBLY WITH DEPTH BAND

REF.	DESCRIPTION	PART NO.	REQ.	REF.	DESCRIPTION	PART NO.	REQ.
31	DISC SUPPORT RING	M1500	1	39	3/8" LOCK WASHER	FLW38	3
32	DISC PLATE	16-00612	1	40	3/8" HEX NUT	FHN38	3
33	12" DISC BLADE	16-001230	1	42	5/16" LOCK WASHER	FLW56	5
34	BEARING SPACER	16-00611	1	43	5/16" HEX NUT	FHN56	5
35	"O" RING	16-00613	1	46	3/4" LOCK WASHER	FLW34	1
36	BEARING	16-00610	2	47	3/4" JAM NUT	FJN34	1
37	DISC AXLE	16-00809	1	48	3/8" X 1-1/2" HEX BOLT	FHB38150G5	3
38	DISC HUB CASTING	16-00608	1	49	5/16" X 1-1/2" CARRIAGE	FCB56150G5	5

FOR COMPLETE ASSEMBLY SEE PAGE 900-2 FIG A

M1500A - MARKER BLADE ASSEMBLY WITH DEPTH BAND



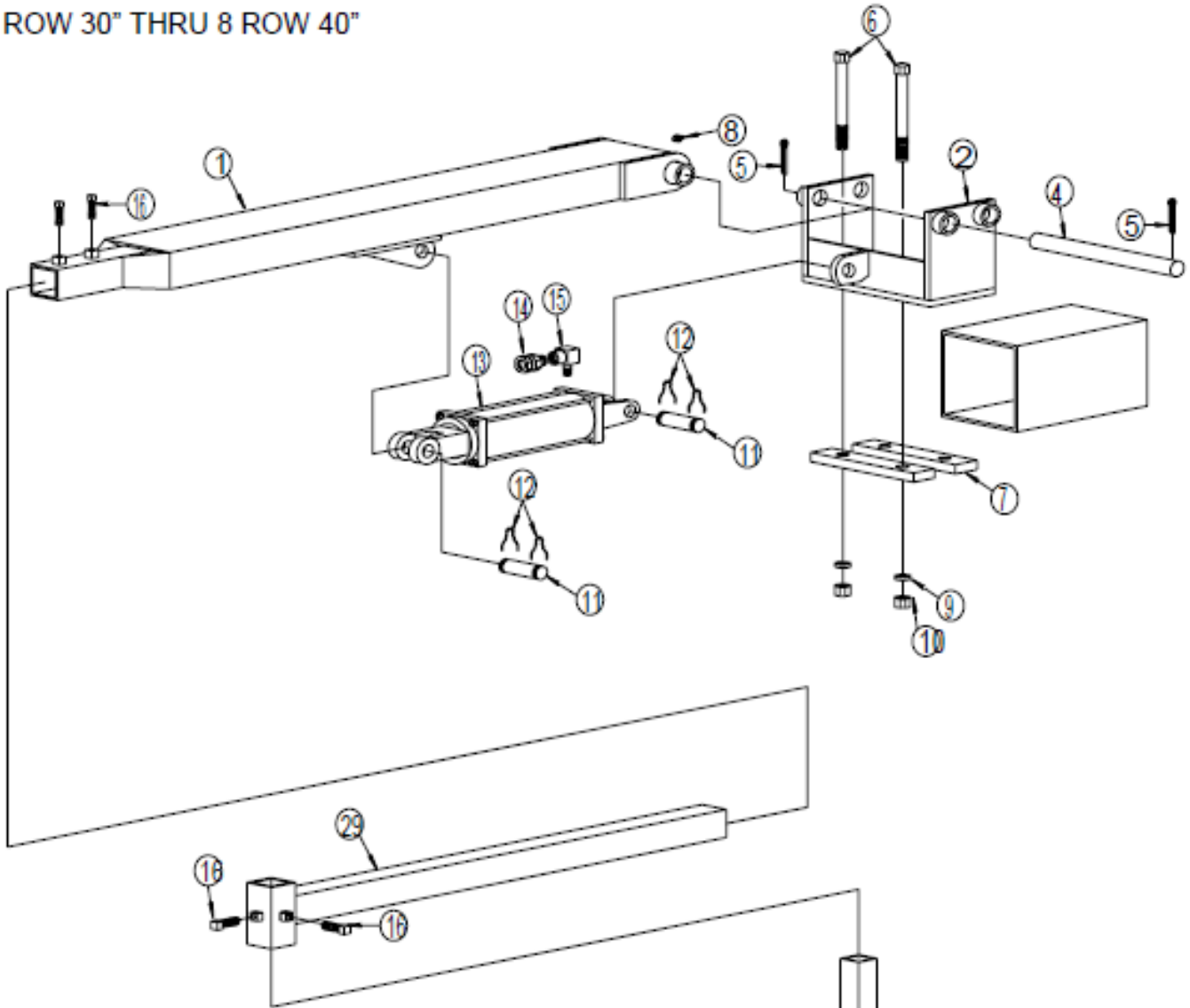


NORWEST

MANUFACTURING

71 SOUTH 215 WEST-RUPERT, ID- PHONE: (208) 436-1770 - FAX: (208) 436-1776

M4000 ROW MARKER SERIES- VERTICAL FOLDING FOR 4 ROW 30" THRU 8 ROW 40"



M1500A - MARKER BLADE ASSEMBLY WITH DEPTH BAND, WITHOUT M7400

