

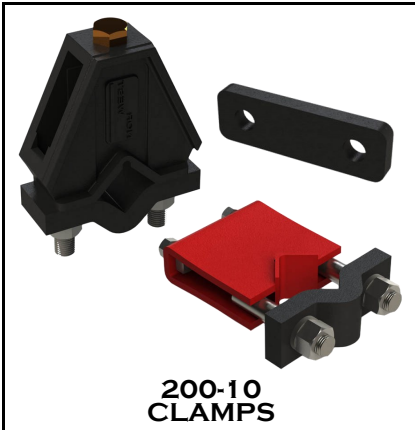


NORWEST

MANUFACTURING

71 SOUTH 215 WEST-RUPERT, ID- PHONE: (208) 436-1770 - FAX: (208) 436-1776

SECTION 200 3-POINT TOOLS



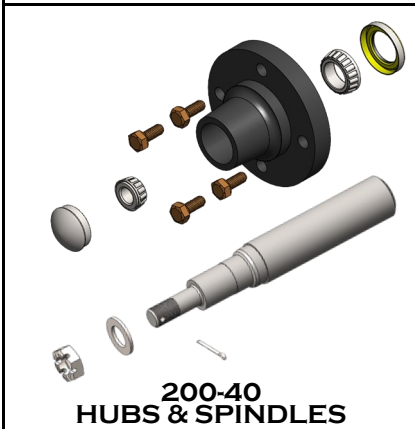
**200-10
CLAMPS**



**200-20
S-TINES, SHANKS &
FOOT PIECES**



**200-30
COULTERS &
GUIDE WHEELS**



**200-40
HUBS & SPINDLES**



**200-50
GAUGE WHEELS**



**200-60
A-FRAMES & TOOL BAR
SPACERS**



**200-70
SPRING TRIP DEVICES**



**200-80
VINE CUTTING, CULTIVATING
& HILLING DISC ASSEMBLIES**



NORWEST

MANUFACTURING

71 SOUTH 215 WEST-RUPERT, ID- PHONE: (208) 436-1770 - FAX: (208) 436-1776

We've Made a Few Changes...

Our 3-Point Tool catalog section is one of the largest portions of our catalog. Because there is so much information in this one section, and so many changes have taken place, we at Norwest decided to format this catalog section differently. In order to make this area of our parts catalog easier to use, we have separated Section 200 into eight (8) smaller sub-sections.

They are listed as follows:

(200-10) Clamps

1. Fabricated Clamps & Straps
2. Cast Clamps & Straps
3. Bar Caps

(200-20) S-Tines, Shanks & Foot Pieces

1. S-Tine's, S-Tine Clamps, Sweeps & Point
2. Coil Shanks & Accessories
3. Center Buster (Injector) Shanks
4. Corrugator's, Shank's & Point for Grainger
5. Straight Shanks
6. Forged Foot Shanks
7. Offset Standards
8. Fabricated Foot Pieces

(200-30) Coulters & Guide Wheels

1. Straight Leg Coulters Assemblies
2. Curved Leg Coulters Assemblies
3. 45° Leg Coulters Assemblies
4. Stabilizer Coulters Assemblies
5. Fluted Coulters Assemblies
6. Welded Steel Wheel Guide Wheel
7. V-Rubber Tire Guide Wheel

(200-40) Hubs & Spindles

1. Replacement Parts
 - Bearings, Seals, Dust Caps, Lug Bolts & Nuts
 - Castle Nuts, Washers, Cotter Pins

(200-50) Gauge Wheels

1. Left & Right Hand
2. Flat Bar & Diamond Bar Applications
3. Straight Leg, 45° Leg & Curved Leg
4. Zero Pressure, Semi-Pneumatic
5. Dual Wheel

(200-60) A-Frames & Tool Bar Spacers

1. 3 Piece A-Frames
2. 1 Piece A-Frames
3. Quick Hitches
4. Tool Bar Spacers

(200-70) Spring Trip Devices

1. Single & Double Spring Trip Clamps
2. Spring Trip Shanks
3. Crust Busters

(200-80) Vine Cutting, Cultivating & Hilling Disc Assemblies

1. Vine Cutters & Water Furrowers
2. T-Shank & Single Shank Hilling Discs
3. Round Shank Hilling Disc Assemblies

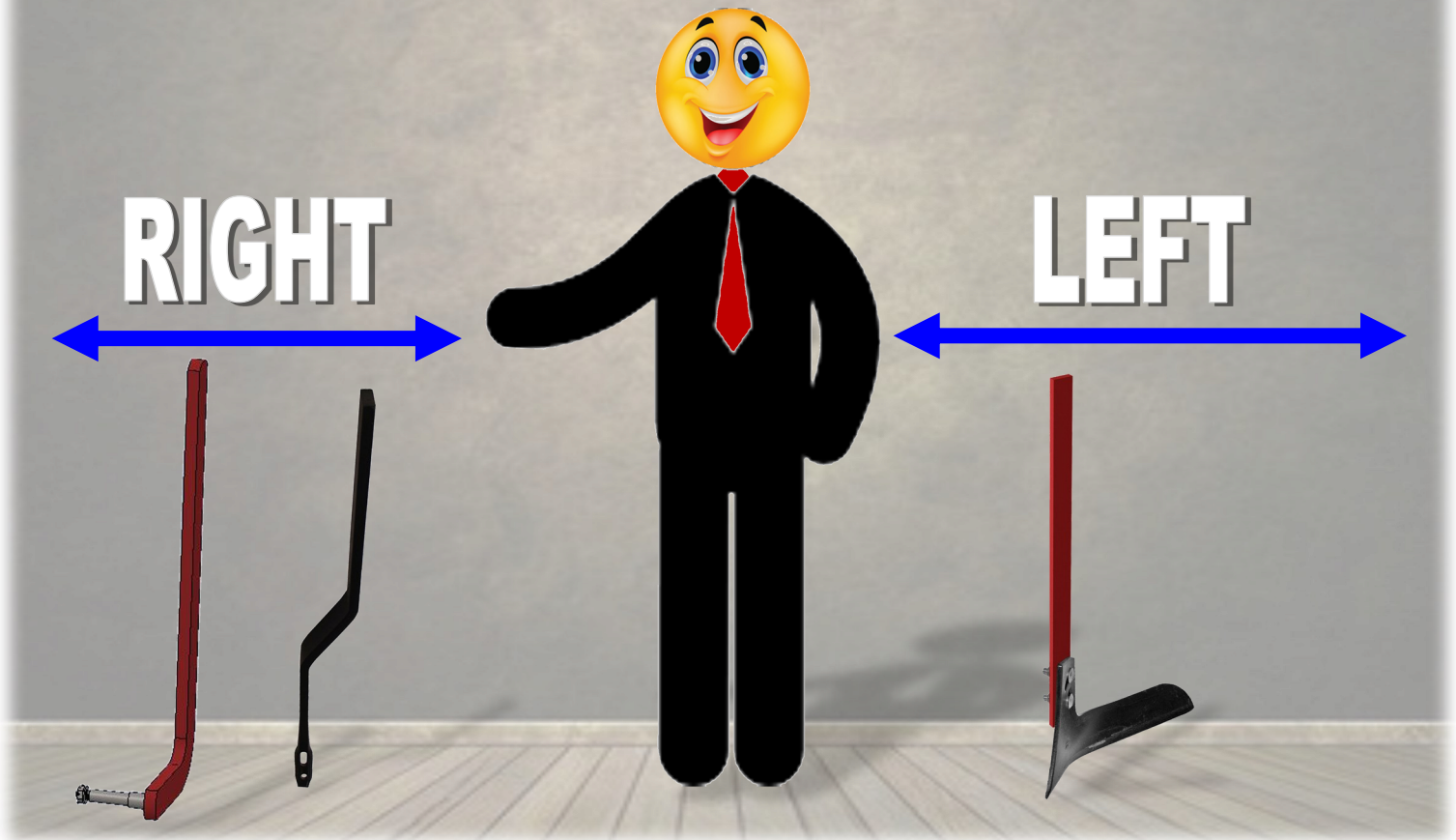
www.norwest-mfg.com

LEFT or RIGHT??

NORWEST DETERMINES IF THE PARTS NEEDED ARE LEFT OR RIGHT HAND

BY USING THE FOLLOWING STEPS:

- PLACE THE PART IN FRONT OF YOU, AS THOUGH THE TRACTOR IS IN FRONT OF YOU MOVING AWAY.
- NOTE WHICH SIDE THE SPINDLE, WHEEL, BEND (Offset Shanks), CURVE (Vegetable Knives), Blade, Hub, etc... IS ON IN RELATION TO YOUR BODY.
- IF THE ABOVE ARE ON YOUR RIGHT, YOU WILL NEED A RIGHT HAND PART.
THE SAME APPLIES FOR THE LEFT SIDE.



www.norwest-mfg.com